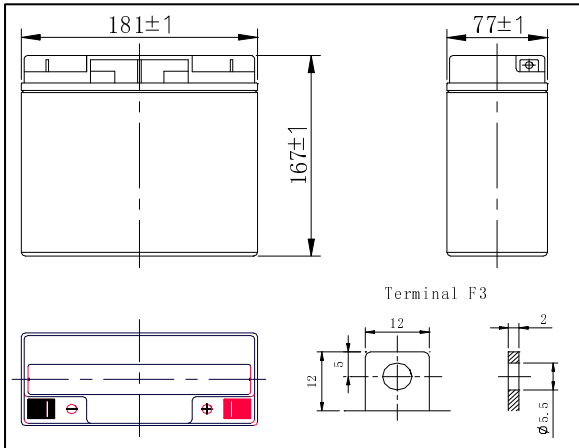




6-DZM-18 (12V18Ah/3hr)

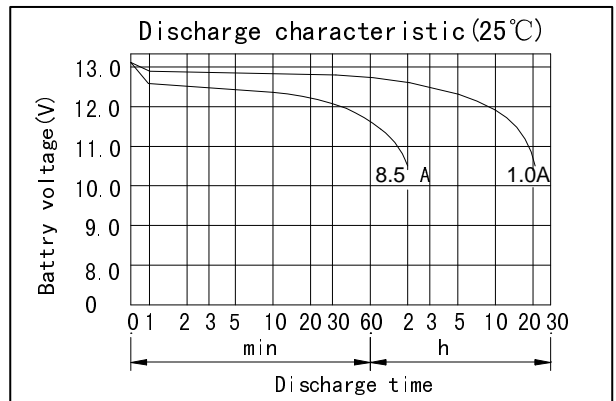
6-DZM-18 is specially designed for deep cycle discharge and grouping usage in electric vehicle application. By the special active material design in the plate, it makes battery have more than 350 cycles life time by 100% D.O.D. Specially, the consistency performance of grouping usage is much better than general series.

Battery Dimensions



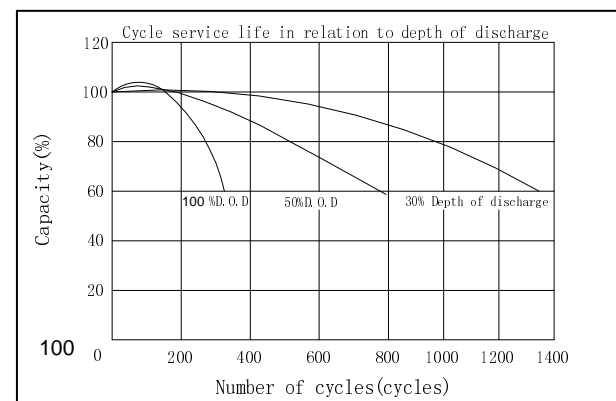
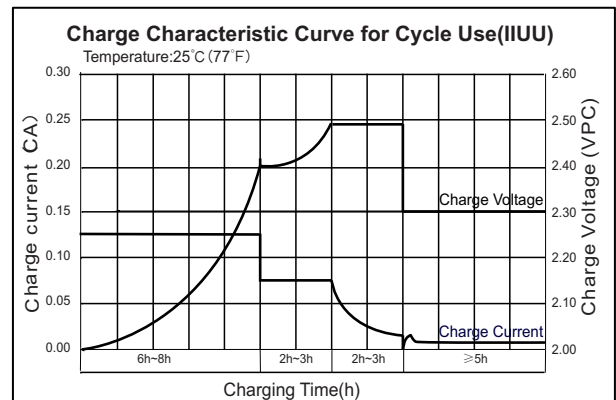
SPECIFICATION

Nominal voltage	12V	
Rated capacity (3 hour rate)	18Ah	
Number of cell	6	
Approx. Weight (Kg)	6.0	
Dimensions	Total Height	6.61inches(167mm)
	Height	6.61inches(167mm)
	Length	7.13inches(181mm)
	Width	3.03inches(77mm)



Characteristics

Capacity 77° F(25°C)	20 hour rate (1.0A、10.5V)	20Ah
	2 hour rate (8.5A、10.5V)	17Ah
Internal Resistance	Full charged Battery 77° F(25°C) : 12mΩ	
Operating Temperature Range	Discharge: -20~60°C	
	Charge: -10~60°C	
	Storage: -20~60°C	
Self-Discharge 3% of capacity declined per month at 20°C(average)		
Max. discharge current 77° F(25°C) : 180 A (5S)		
Charge (Constant Voltage)	Float: 13.6~13.8 V/77° F(25°C)	
	Cycle: 14.7 ~14.9 V/77° F(25°C) Max. Current: 4.5A	



OREMA POWER CO., LTD

Add: Datang Industry Park Xinfeng Ganzhou City, Jiangxi Province, China

TEL: +86-0797-2299669 +86-0797-2299553

FAX: +86-0797-2299553

