



UNG55-12 (12V55Ah/20hr)



UNG Series is GEL battery which is manufactured with AGM separator and colloidal Silicon. Gel battery are featured with low self-discharge , strong ability to recover from deep discharging , excellent cycle life and performance at cold ambient temperatures than conventional VRLA

Battery Construction

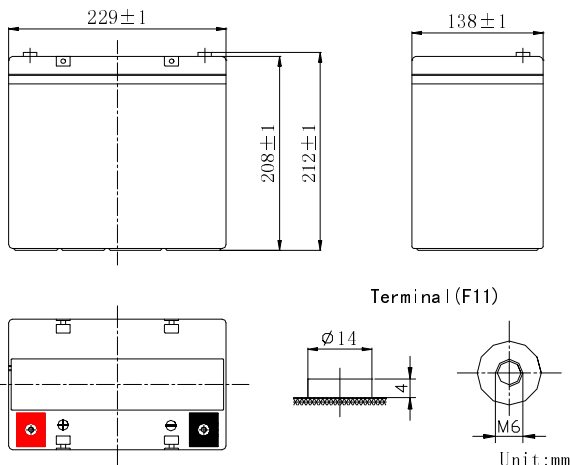
| Component | Positive plate | Negative plate | Container | Cover | Safety valve | Terminal | Separator | Electrolyte |
|--------------|----------------|----------------|-----------|-------|--------------|----------|------------|-------------------|
| Raw material | Lead dioxide | Lead | ABS | ABS | Rubber | Copper | Fiberglass | Colloidal silicon |

General Feature

- Micro millimeter SiO₂ and H₂SO₄ technology for Efficient gas recombination of up to 99% and Freedom from electrolyte maintenance or water adding.
- Not restricted for air transport-complies with IATA/ICAO Special Provision A67.
- UL-recognized component.
- Can be mounted in any orientation.
- Computer designed lead, calcium tin alloy grid for high power density.
- Long service life, float or cyclic applications.
- Maintenance-free operation.
- Low self discharge.

SPECIFICATION

Nominal voltage 12V
 Number of cell 6
 Length(mm/inch) 229/9.01
 Width(mm/inch) 138/5.43
 Height(mm/inch) 208/8.19
 Total Height(mm/inch) 212/8.35
 Approx. Weight (kg/lbs) 16.5/36.37



Performance Characteristics

| | | |
|--|---|------|
| Capacity 77°F(25°C) | 100 hour rate (0.65A、 11.1V) | 65Ah |
| | 20 hour rate (2.75A、 10.8V) | 55Ah |
| | 10 hour rate (5.2A、 10.5V) | 52Ah |
| | 1 hour rate (32A、 9.6V) | 32Ah |
| Internal Resistance | Full charged Battery77°F(25°C):9mΩ | |
| Operating Temperature Range | Discharge: -20~60°C | |
| | Charge: -10~60°C | |
| | Storage: -20~60°C | |
| Self-Discharge 3% of capacity declined per month at 20°C(average) | | |
| Max. discharge current77°F(25°C): 550A(5S) | | |
| Charge (Constant Voltage) | Float: 13.38~13.68 V/77° F(25°C) | |
| | Cycle:14.28~14.52 V/77°F(25°C) Max. Current: 13.8A | |

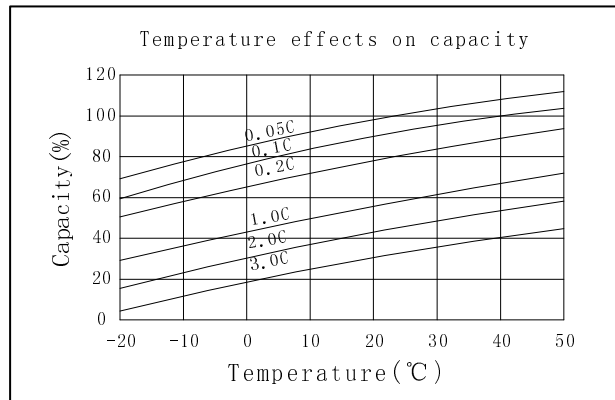
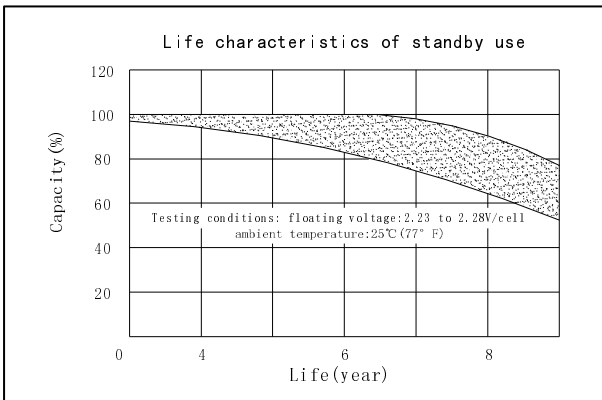
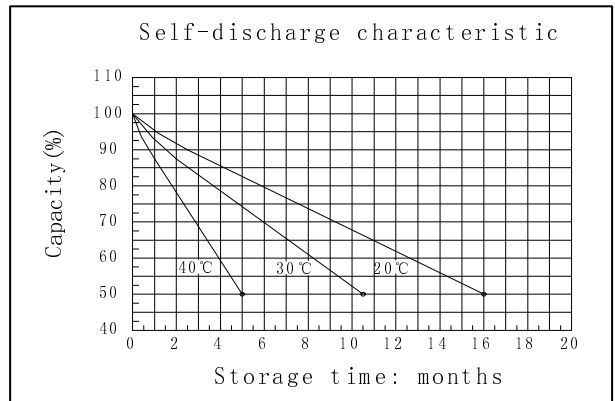
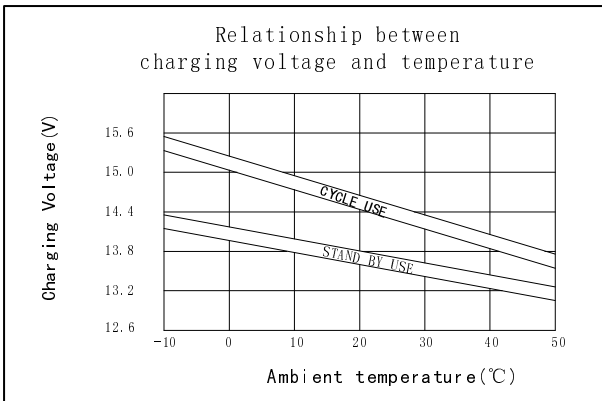
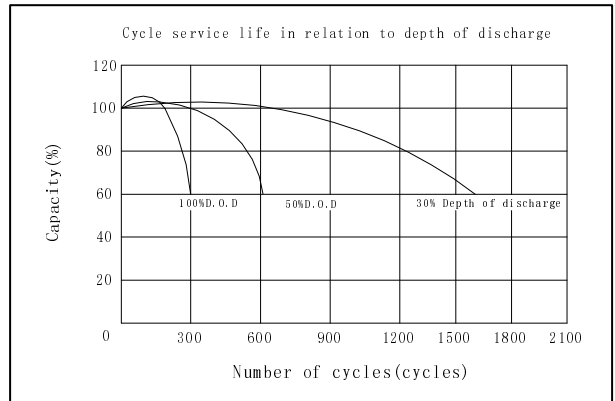
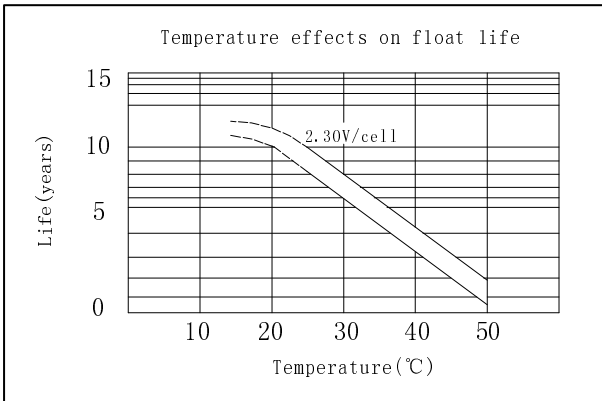
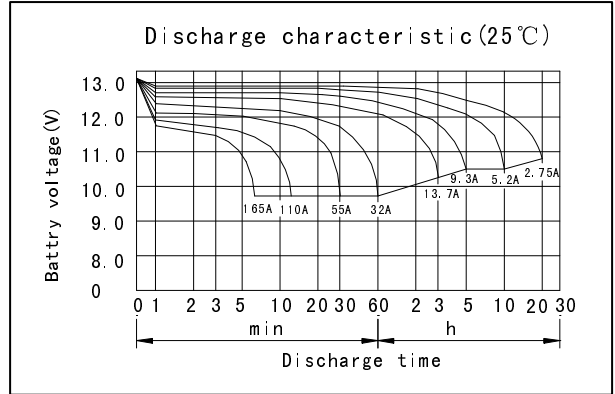
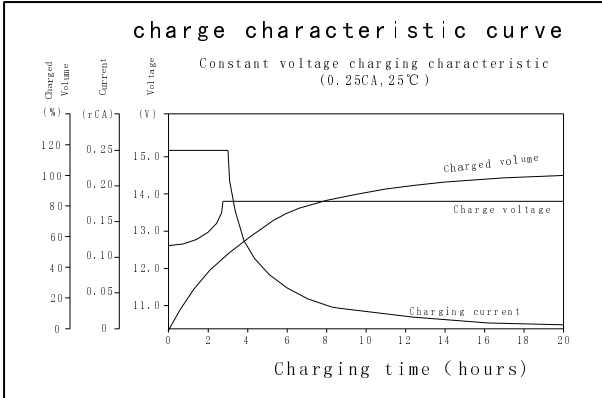
Discharge Constant Current (Amperes at 77° F25 °C)

| End Point Volts/Cell | 10min | 15min | 30min | 1h | 3h | 5h | 10h | 20h | 100h |
|----------------------|-------|-------|-------|------|------|------|------|------|------|
| 1.60V | 123 | 93.0 | 55.0 | 32.0 | 14.2 | 9.70 | 5.45 | 2.95 | 0.68 |
| 1.65V | 117 | 89.3 | 53.5 | 31.4 | 14.0 | 9.60 | 5.40 | 2.95 | 0.68 |
| 1.70V | 109 | 85.0 | 52.0 | 30.7 | 13.7 | 9.45 | 5.30 | 2.90 | 0.67 |
| 1.75V | 102 | 80.2 | 50.5 | 29.9 | 13.4 | 9.30 | 5.20 | 2.85 | 0.67 |
| 1.80V | 95.0 | 76.5 | 48.5 | 29.0 | 13.0 | 9.10 | 5.05 | 2.75 | 0.66 |

Discharge Constant Power (watts at 77° F 25 °C)

| End Point Volts/Cell | 10min | 15min | 30min | 45min | 1h | 2h | 3h | 5h | 10h |
|----------------------|-------|-------|-------|-------|------|------|------|------|------|
| 1.60V | 234 | 181 | 109 | 83.9 | 67.8 | 40.8 | 28.8 | 18.6 | 10.2 |
| 1.65V | 221 | 173 | 107 | 82.7 | 66.3 | 40.0 | 28.3 | 18.5 | 10.2 |
| 1.70V | 209 | 167 | 105 | 81.0 | 64.7 | 39.2 | 27.7 | 18.0 | 10.1 |
| 1.75V | 196 | 159 | 103 | 79.2 | 63.2 | 38.2 | 27.1 | 17.9 | 10.0 |
| 1.80V | 182 | 151 | 101 | 77.1 | 61.6 | 37.2 | 26.5 | 17.7 | 9.86 |

(Note)The above characteristics data are average values obtained Within three charge/discharge cycles not the minimum values.



OREMA POWER CO., LTD

Add: Datang Industry Park Xinfeng Ganzhou City, Jiangxi Province, China

TEL: +86-0797-2299669 +86-0797-2299553

FAX: +86-0797-2299553



www.oremabattery.com